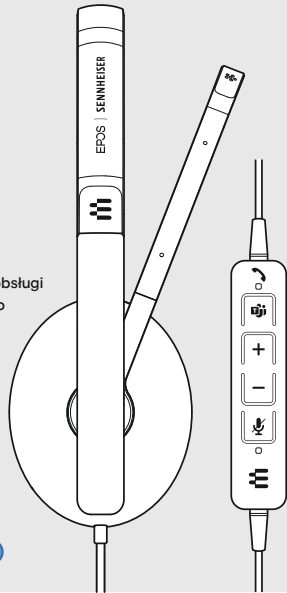


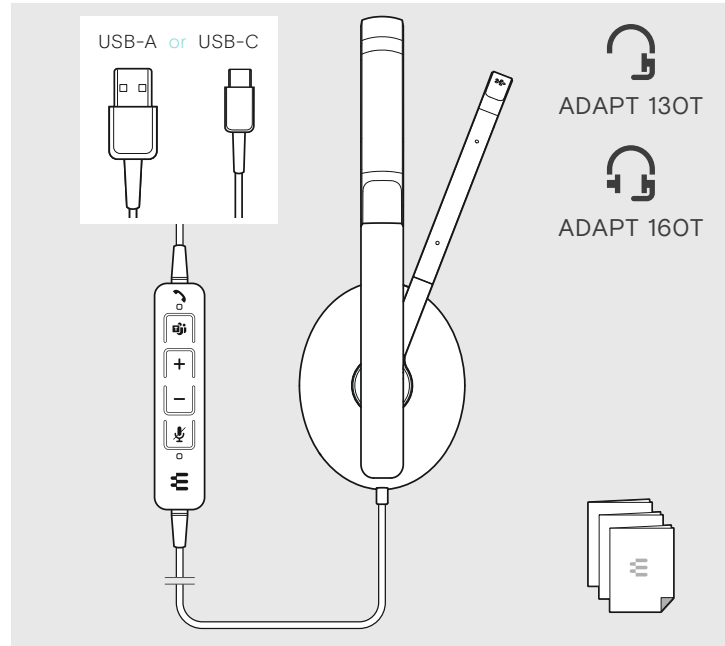
ADAPT 130T USB II | ADAPT 130T USB-C II
 ADAPT 160T USB II | ADAPT 160T USB-C II
 USB headset certified for Microsoft® Teams

- EN Quick Guide
- DE Kurzanleitung
- FR Guide express
- IT Guida rapida
- ES Guía rápida
- PT Guia Rápido
- NL Mini handleiding
- EL Γρήγορος οδηγός
- DA Kvikvejledning
- SV Snabbguide
- FI Pikaopas
- PL Skrócona instrukcja obsługi
- RU Краткое руководство
- ZH 袖鸟 駝 文
- TW 袖鸟 駝 文
- TR Hızlı Kılavuz
- JA 袖鸟 駝 文
- ID Panduan Cepat
- KO 袖鸟 駝 文

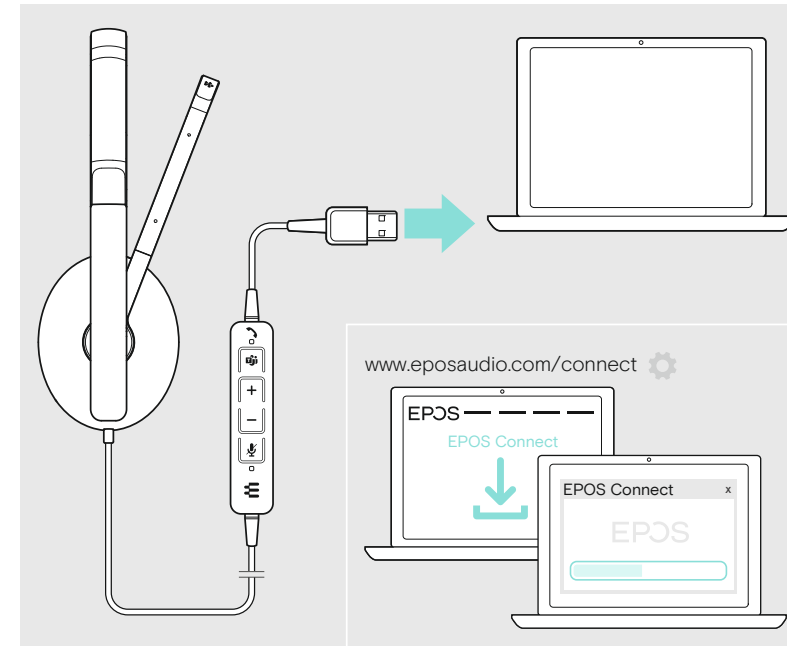


Model: SCWH18

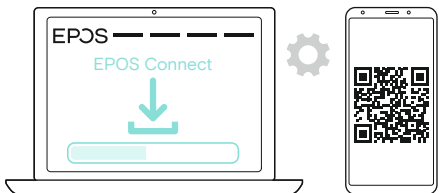
Package contents | Lieferumfang | Contenu de la boîte | Contenuti della confezione |
 Contenido del embalaje | Conteúdo da embalagem | Inhoud verpakking | Περιεχόμενα συσκευασίας |
 Pakkens indhold | Innehåll i förpackningen | Pakkauksen sisältö | Zawartość opakowania |
 Содержимое упаковки | 內 容 物 清 單 | Kutunun içeriği | المحتويات | Isi kemasan |
 內 容 物 清 單



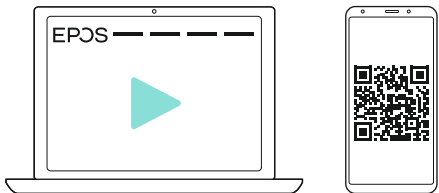
Connecting the headset | Headset anschließen | Connexion du casque microphone |
 Collegamento dell'headset | Conectar el headset | Ligar os microauscultadores | Headset aansluiten |
 Σύνδεση του σετ κεφαλής | Tilslutning af hovedsættet | Anslut headset | Liitä kuulokemikrofoni |
 Podłączenie zestawu słuchawkowego | Подключение гарнитуры | 耳機連接 | 鴨鵝 鑰 提 |
 Kulaklığın bağlanması | إسحق زح 鯉 鑰 提 | Menyambungkan headset | headset 鑰 提



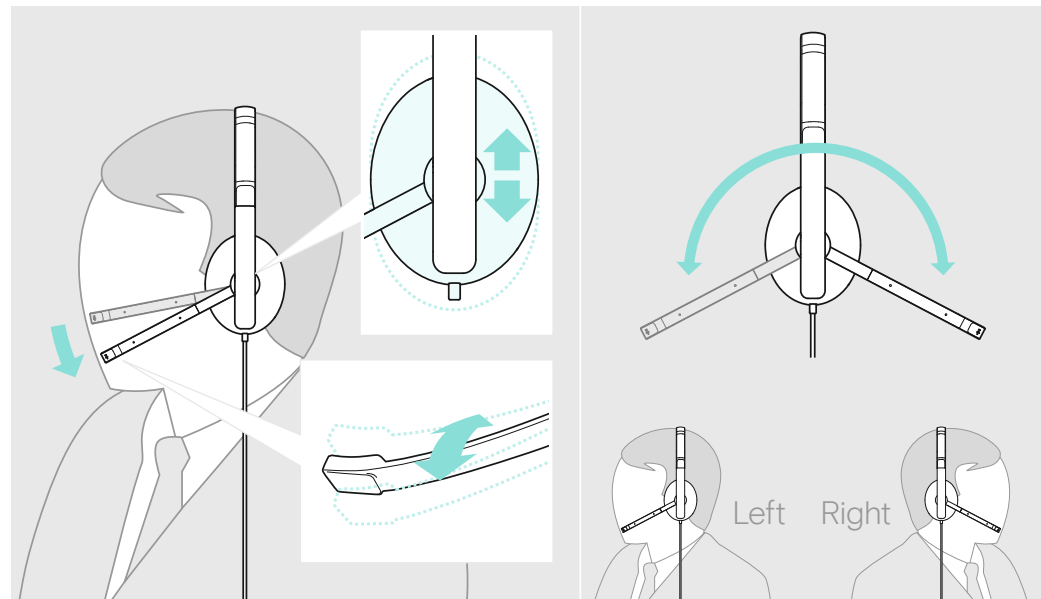
For product specific software and firmware upgrade with EPOS Connect go to:
www.eposaudio.com/connect



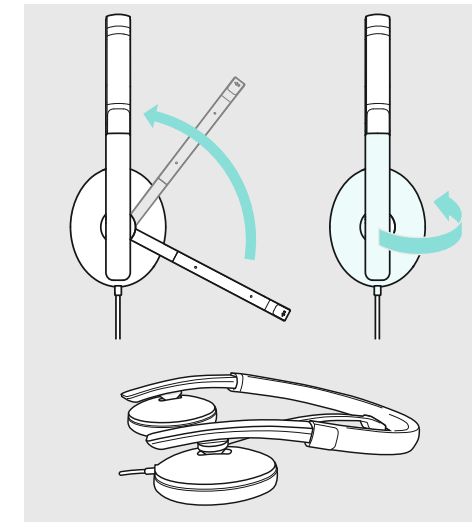
For "How-to" videos go to:
www.eposaudio.com/how-to-adapt-100



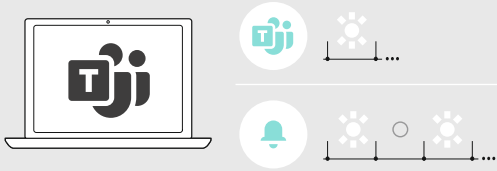
Adjusting and wearing the headset | Headset anpassen und tragen | Ajuster et porter l'oreillette | Indossare e adattare l'headset |
 Ajustar y llevar el headset | Ajustar e utilizar o micro-auscultador | De headset aanpassen en dragen | Ρυθμίστε και προσαρμόστε το σετ κεφαλής |
 Tilpasning og brug af hovedtelefonen | Justera och ta på headsetet | Kuulokemikrofonin säätö ja käyttäminen | Dostosowanie oraz noszenie zestawu
 słuchawkowego | Подгонка и ношение головного комплекта | 調整 等 鑰 提 鑰 提 黃 鑰 提 | 調整 等 鑰 提 鑰 提 黃 鑰 提 |
 Kulaklık setinin uyarlanması ve takılması | إسحق زح 鯉 鑰 提 駝 文 | Menyusuai kandan memakai headset | headset 鑰 提 駝 文



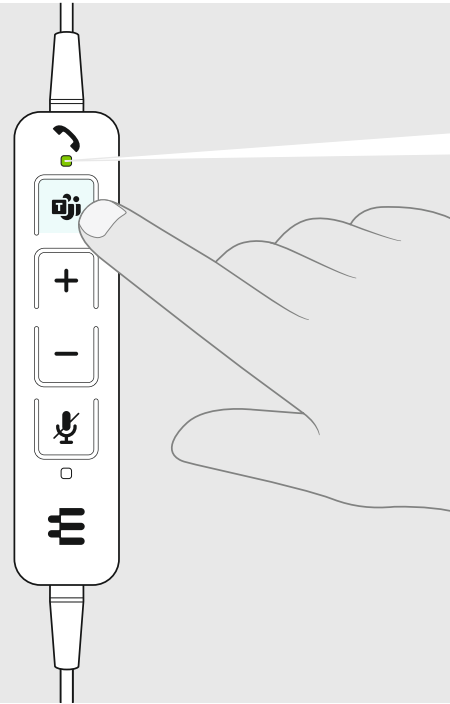
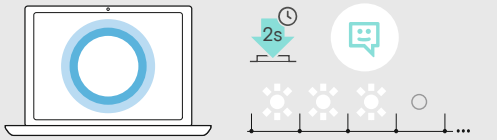
Transporting the headset | Headset transportieren |
 Transporter le casque-micro | Trasporto dell'headset |
 Transportar el headset | Transportar os micro-auscultadores |
 De headset transporteren | Μεταφορά του ακουστικού |
 Transport af headset | Transportera headset |
 Kuulokkeiden kuljettaminen | Transport zestawu słuchawkowego |
 Транспортировка гарнитуры | 調整 等 鑰 提 | 調整 等 鑰 提 |
 Kulaklık setinin taşınması | إسحق زح 鯉 鑰 提 駝 文 | Membawa headset | headset 鑰 提 駝 文



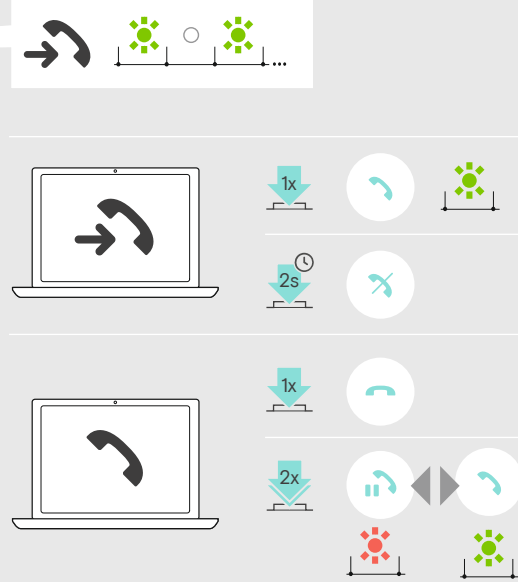
Microsoft Teams features



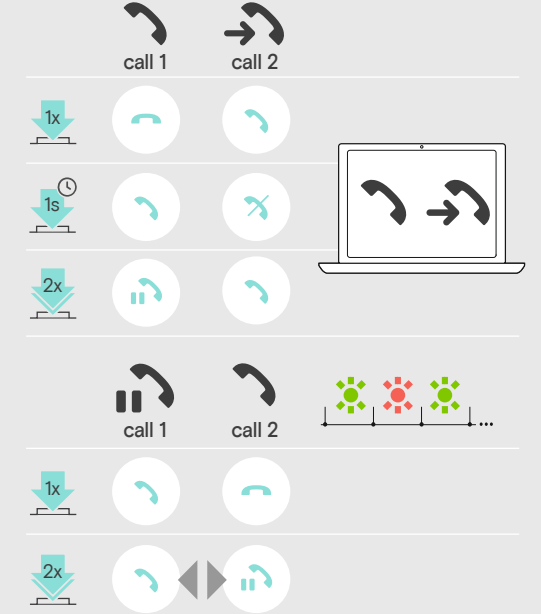
Invoking Microsoft Cortana



Handling calls



Managing multiple calls



Adjusting the volume | Lautstärke einstellen | Régler le volume | Impostazione del volume | Ajustar el volumen | Ajustar o volume | Volume instellen | Ρύθμιση έντασης | Indstilling af lydstyrke | Ställ in volymen | Äänenvoimakkuuden säätäminen | Regulacja głośności | Регулировка громкости | 靈蒜 | 御豚 | Sesdüzeyini ayarla | 鑰 | 鑰 | Mengatur volume suara | 靈蒜 | 御豚

Muting the microphone | Mikrofon stummschalten | Couper le microphone | Silenziamento del microfono | Silenciar el micrófono | Activar o modo de silêncio no microfone | Microfoon op mute schakelen | Σίγηση μικροφώνου | Mikrofoon op mute schakelen | Stäng av mikrofonen | Mikrofonin mykistäminen | Wyciszenie mikrofonu | Отключение микрофона | 鑰 | 鑰 | 御豚 | 御豚 | Mikrofönukapat | 鑰 | 鑰 | Menonaktifkansuaramikrofon | 鑰 | 鑰

Replacing the ear pad | Ohrpolster austauschen | Remplacer le coussinet d'oreille | Sostituzione dei cuscinetti auricolari | Cambiar las almohadillas | Substituir as almofadas | Oorkussens vervangen | Αντικατάσταση των καλυμμάτων αυτιών | Udskitfning af ørepolstringer | Byt øronkuddar | Korvarehmusteiden vaihto | Wymiana poduszek słuchawkowych | Замена подушек амбушюр | 鑰 | 鑰 | 鑰 | 鑰 | Kulakyaştığının değiştirilmesi | 鑰 | 鑰 | 鑰 | 鑰 | Mengganti Bantalan Telinga | 鑰 | 鑰 | 鑰 | 鑰

Cleaning the product | Produkt reinigen | Nettoyage du produit | Pulizia del prodotto | Limpeza del producto | Limpar o produto | Het product reinigen | Καθαρισμός του προϊόντος | Rengöring af produktet | Rengöra produkten | Tuotteen puhdistus | Czyszczenie produktu | Чистка продукта | 鑰 | 鑰 | 鑰 | 鑰 | Ürünün temizlenmesi | 鑰 | 鑰 | 鑰 | 鑰 | Membersihkan produk | 鑰 | 鑰

