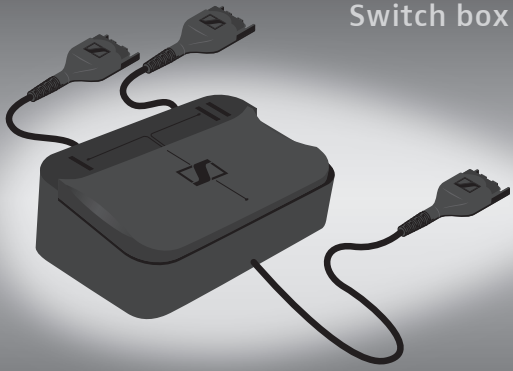


UI 815

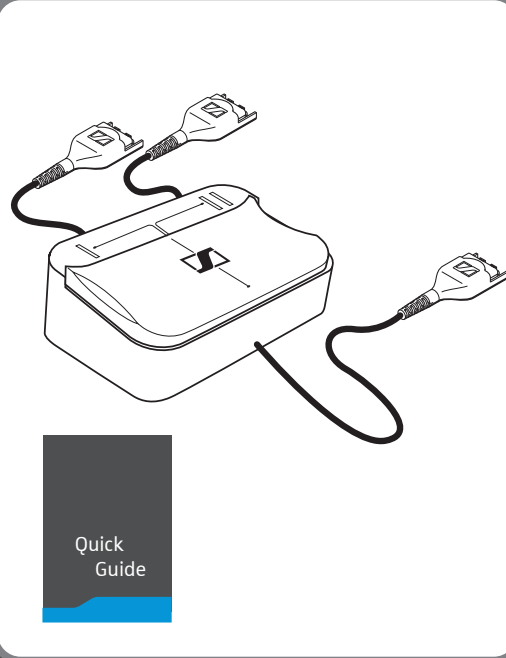
Switch box



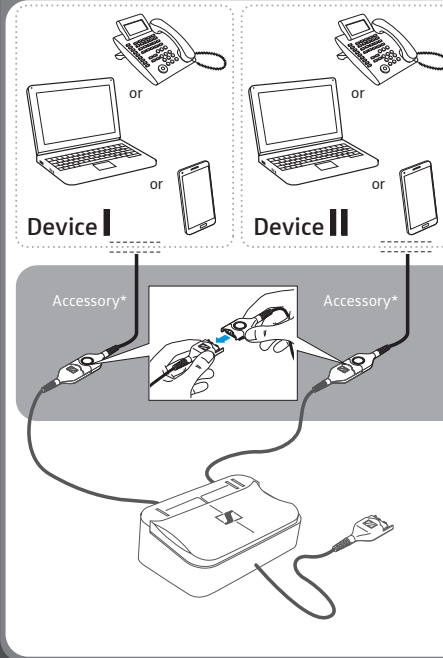
Quick Guide | Instrucciones resumidas
 Kurzanleitung | Guida rápido
 Guide rapide | Beknopte handleiding
 Guida rapida



Delivery includes | Lieferumfang | Contenu |
 Volume di fornitura | Volumen de suministro |
 Itens fornecidos | Leveringsomvang



Connection possibilities | Anschlussmöglichkeiten | Possibilités de raccordement | Possibilitá di collegamento |
 Posibilidades de conexión | Ligações possíveis | Aansluitmogelijkheden



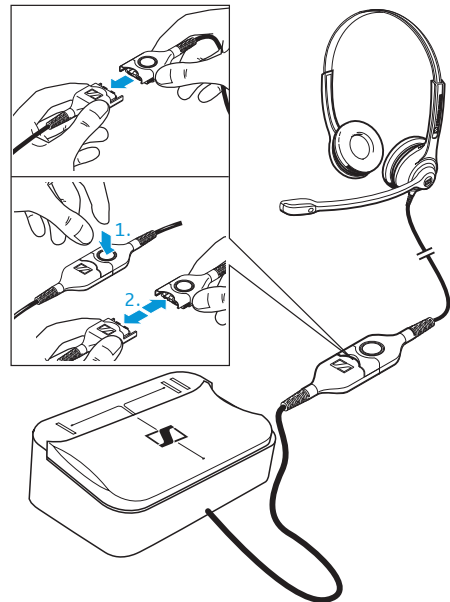
*Accessory - not included

		Headset Compatibility guide www.sennheiser.com/telephone-headset-compatibility
		USB-ED 01 art.no. 506035
		CMB 01 CTRL art.no. 506090

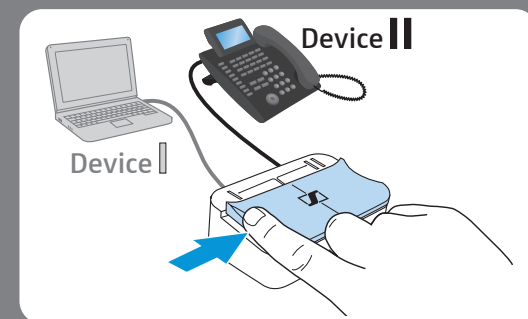
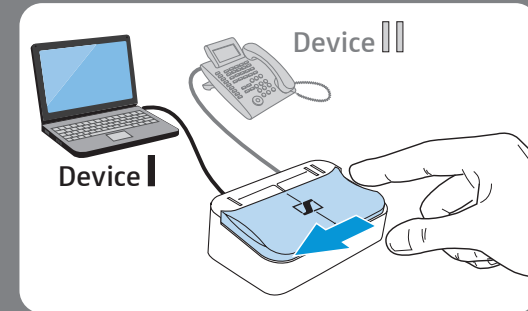


For support go to
www.sennheiser.com/cco/support

Connecting a headset | Headset anschließen | Connexion du casque microphone | Collegamento dell'headset | Conectar el headset | Ligar os microauscultadores | Headset aansluiten



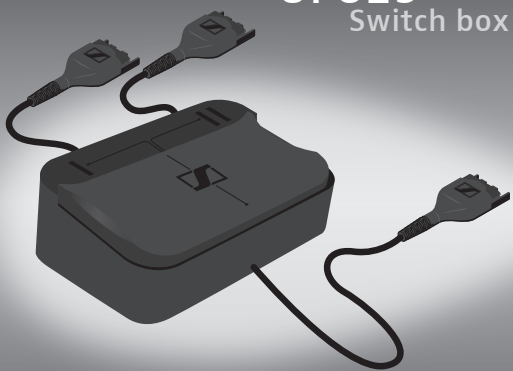
Switching between I & II | Zwischen I und II umschalten | Commutation entre I et II | Commutazione tra I e II | Conmutar entre I y II | Comutar entre I e II | Tussen I en II omschakelen



Sennheiser Communications A/S
 Industriparken 27, DK-2750 Ballerup, Denmark
www.sennheiser.com

Printed in China, Publ. 04/16, A02

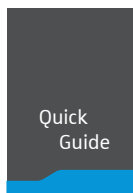
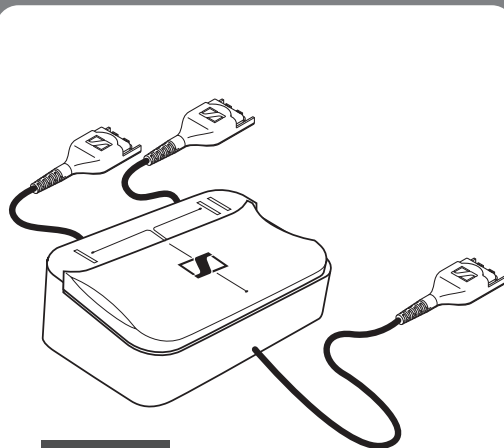
UI 815 Switch box



Quick Guide
Snabbguide
Quick Guide
Krótka instrukcja
obsługi

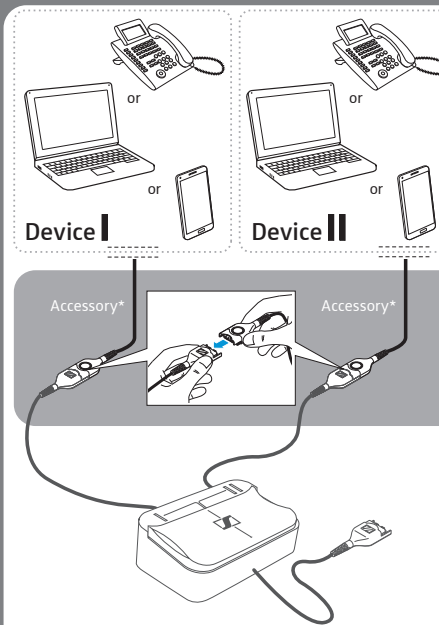
Hızlı Kılavuz
快速指南
クイックガイド

Leveringsomfang | Medfølgende delar |
Leveranseomfang | Zakres dostawy | Teslimat Kapsamı |
供货范围 | 同梱されているもの

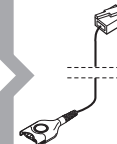


Quick
Guide

Tilslutningsmuligheder | Anslutning | Tilkoblingsmuligheter | Możliwości podłączenia | Bağlantı olanakları |
连接可能性 | 接続方法



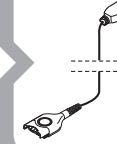
*Accessory - not included



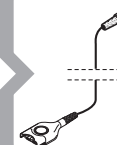
Headset Compatibility guide



www.sennheiser.com/
telephone-headset-compatibility



USB-ED 01
art.no. 506035



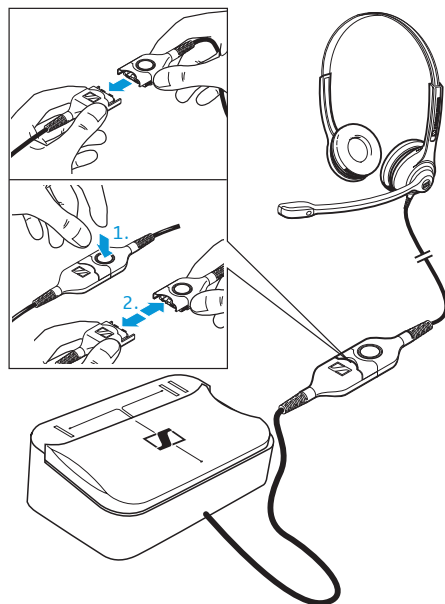
CMB 01 CTRL
art.no. 506090

SENNHEISER

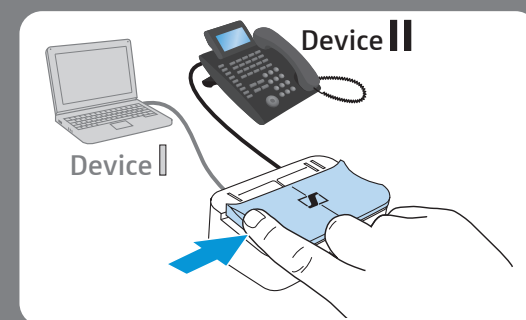
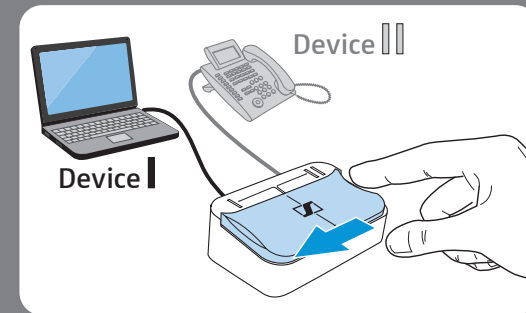


For support go to
www.sennheiser.com/cco/support

Tilslutning af headsettet | Anslut headset | Tillslutt
hodesett | Podłączenie zestawu słuchawkowego |
Kulaklığın bağlanması | 连接耳机 |
ヘッドセットを接続する



Skift mellem I og II | Växla mellan I och II | Skift mellom I og II | Przełączanie między I i II | I ve II arasında geçiş |
IとIIの間切替 | IとIIの間の切り替え



SENNHEISER

Sennheiser Communications A/S

Industriparken 27, DK-2750 Ballerup, Denmark
www.sennheiser.com

Printed in China, Publ. 04/16, A02