

# SC 45 USB MS SC 75 USB MS

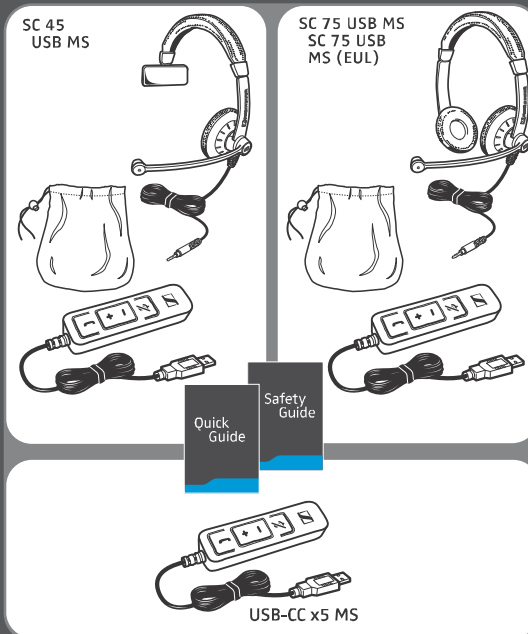


Quick Guide  
Kurzanleitung  
Guide rapide  
Guida rapida

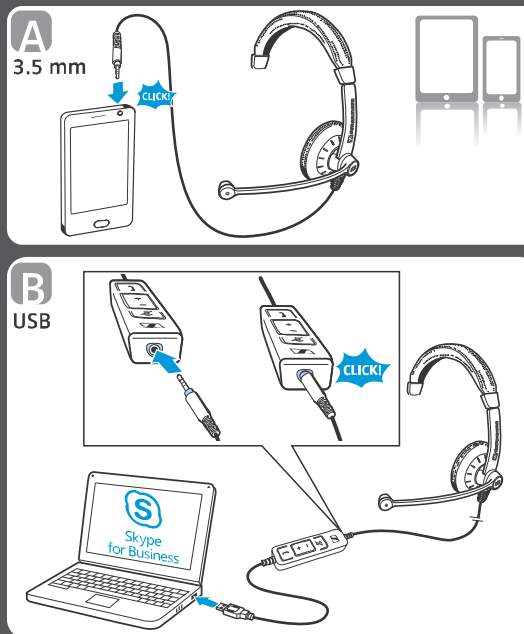
Instrucciones resumidas  
Guida rápido  
Beknopte handleiding



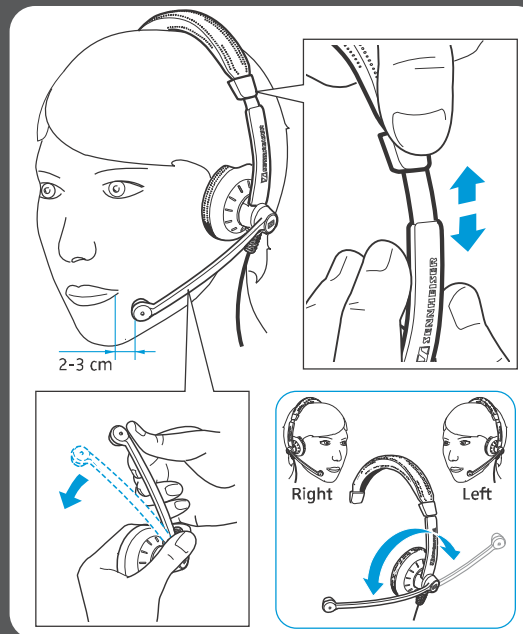
Delivery includes | Lieferumfang | Contenu |  
Volume di forniture | Volumen de suministro |  
Itens fornecidos | Leveringsomvang



Connection possibilities | Anschlussmöglichkeiten |  
Possibilités de raccordement | Possibilità di  
collegamento | Posibilidades de conexión | Ligações  
possíveis | Aansluitmogelijkheden



Wearing the headset | Headset aufsetzen |  
Mettre le casque-micro | Indossare l'headset |  
Ponerse los auriculares | Colocar o  
micro-auscultador | De headset opzetten

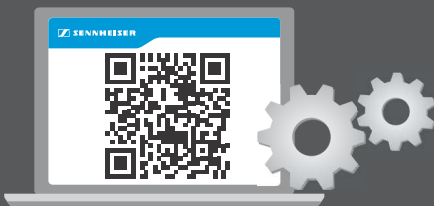


Detailed information | Ausführliche Informationen  
Informations détaillées | Informazioni  
dettagliate | Informaciones detalladas |  
Informações detalhadas | Uitvoerige informatie

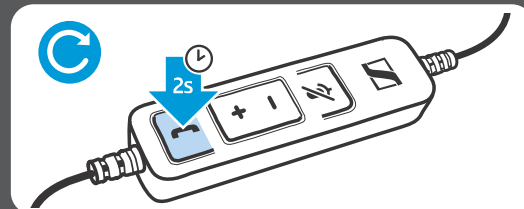
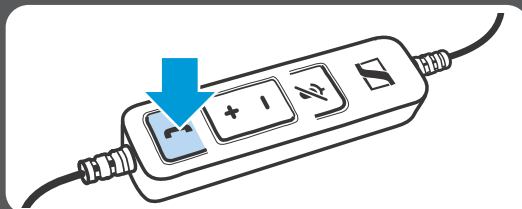
To accept/end a call | Anruf annehmen/beenden |  
Prendre/terminer un appel | Accettare/Terminare  
una chiamata | Contestar/finalizar llamada |  
Atender/terminar chamada |  
Gesprek aannemen/beëindigen

Redialing | Wahlwiederholung | Recomposer le  
dernier numéro | Ripetizione della selezione |  
Rellamada | Remarcação | Nummerherhaling

Replacing the ear pad | Ohrpolster austauschen |  
Remplacer le coussinet d'oreille | Sostituzione dei  
cuscinetti auricolari | Cambiar las almohadillas |  
Substituir as almofadas | Oorkussens vervangen

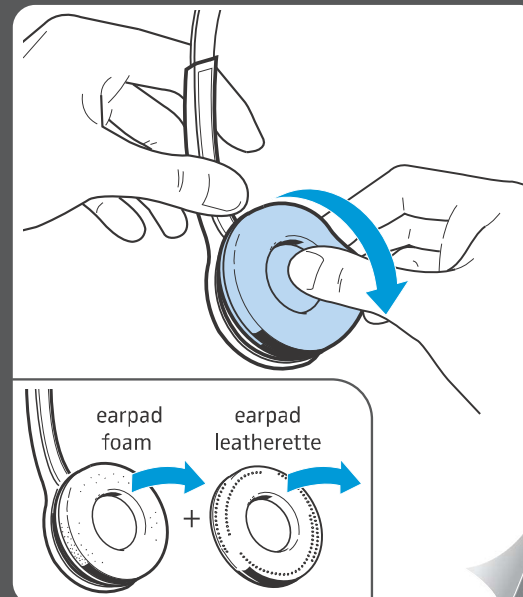
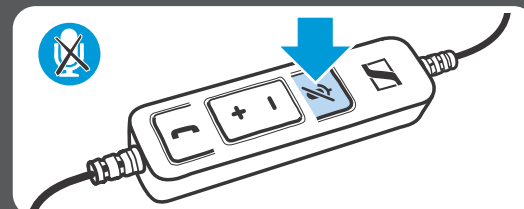
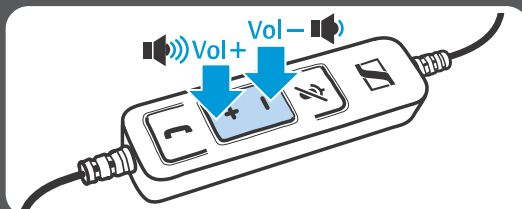


For product specific software and firmware upgrade  
with the "Sennheiser Updater" go to  
[www.sennheiser.com/cco/software](http://www.sennheiser.com/cco/software)



Adjusting the volume | Lautstärke einstellen |  
Régler le volume | Impostazione del volume |  
Ajustar el volumen | Ajustar o volume |  
Volume instellen

Mute Microphone | Mikrofon stumm schalten |  
Couper le microphone | Silenziamento del microfono  
Silenciar el micrófono | Activar o modo de silêncio  
no microfone | Microfoon op mute schakelen



**headset company**  
C+HC Computer + Headset Company GmbH  
Die Headset Spezialisten  
Borsteler Chaussee 49 | 22453 Hamburg | Tel.: (040) 500 580 20  
[www.comhead.de](http://www.comhead.de)

# SC 45 USB MS SC 75 USB MS

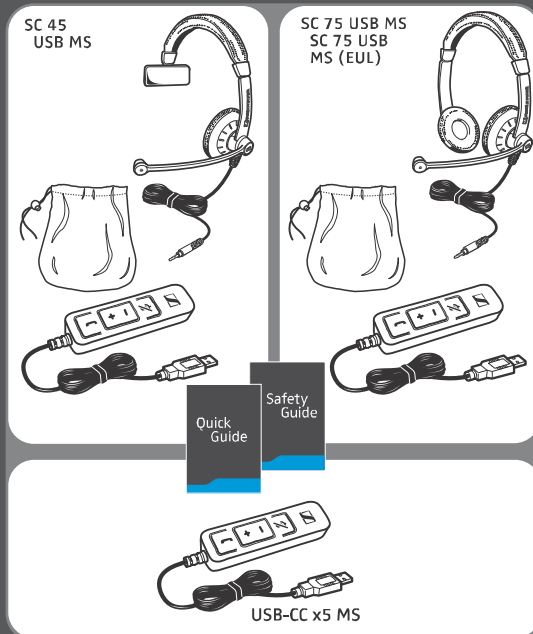


Quick Guide  
Snabbguide  
Quick Guide  
Krótka instrukcja obsługi

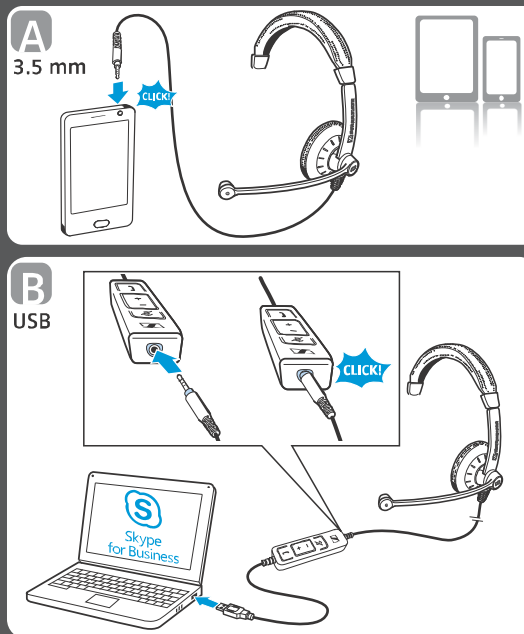
Hızlı Kılavuz  
快速指南  
クイックガイド

**SENNHEISER**

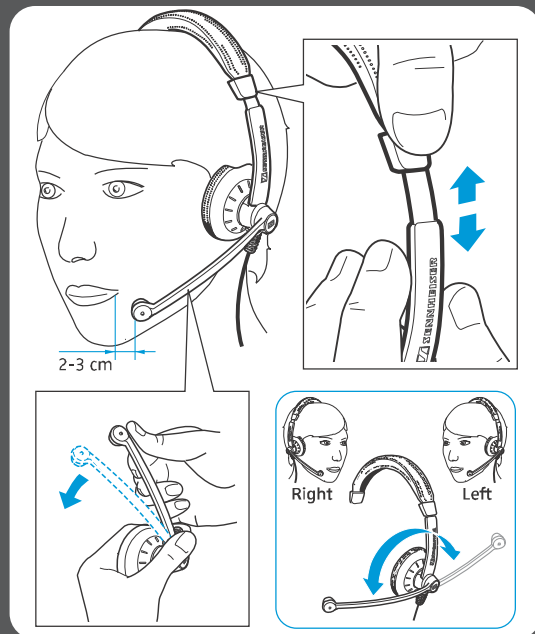
Leveringsomfang | Medfølgende delar |  
Leveranseomfang | Zakres dostawy | Teslimat  
Kapsamı | 供货范围 | 同梱されているもの



Tilslutningsmuligheder | Anslutning |  
Tilkoblingsmuligheter | Możliwości podłączenia |  
Bağlantı olanakları | 连接可能性 | 接続方法



Brug af hovedsæt | Ta på headsetet | Sette på  
hodesettet | Zakładanie zestawu słuchawkowego |  
Kulaklı in takılması | 戴上耳机 | ヘッドセットを装着する

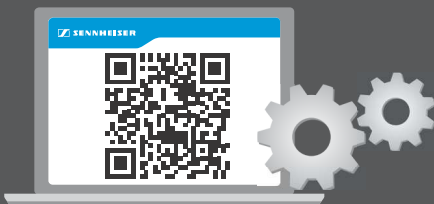


Udførlige | Mer information | Detaljert informasjon  
Szczegółowe informacje | Ayrıntılı bilgiler |  
详细信息 | 詳細情報

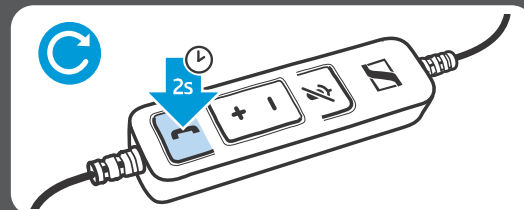
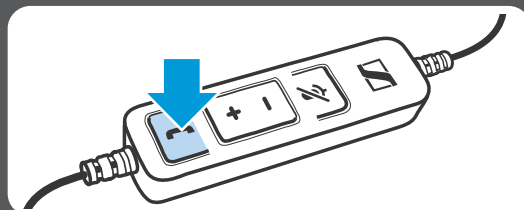
Modtagelse/afslutning af opkald | Ta emot/  
avsluta ett samtal | Ta imot /avslutte anrop |  
Odbieranie / kończenie połączenia | Çağrıyı  
al/kapat | 接听/挂断来电

Gentagelse af nummerindtastning | Slå  
telefonnummer igen | Gjentatt oppringing |  
Ponowne wybieranie numeru | Tekrar ara |  
重拨 | リダイヤル

Udskiftning af ørepolstringer | Byt öronkuddar |  
Utskiftning av øreputer | Wymiana poduszek  
słuchawkowych | Kulak yastığının değiştirilmesi |  
更换耳垫 | イヤーパッドを交換する

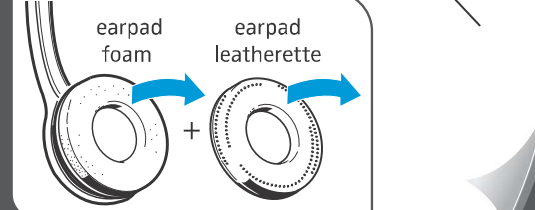
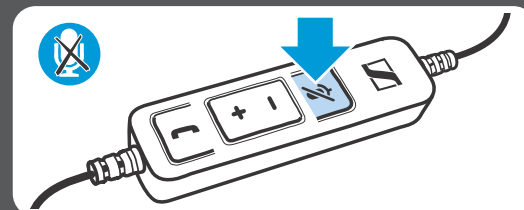
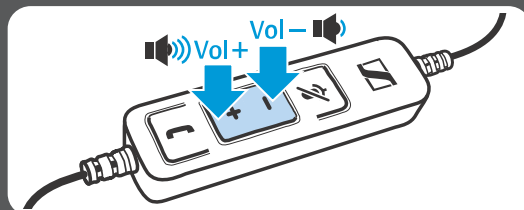
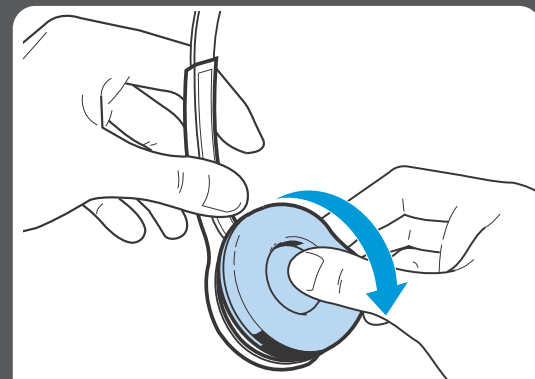


For product specific software and firmware upgrade  
with the "Sennheiser Updater" go to  
[www.sennheiser.com/cco/software](http://www.sennheiser.com/cco/software)



Indstilling af lydstyrke | Ställ in volymen | Stille  
inn lydstyrke | Regulacja głośności | Ses düzeyini  
ayarla | 调节音量 | 音量的調整

Frakobling af lyd på mikrofon | Stäng av  
mikrofonen | Aktiverer mikrofonens lydøsfunksjon  
Wyciszenie mikrofonu | Mikrofonu kapat | 麦克风  
静音 | マイクのミュート



**headset company**  
C+HC Computer + Headset Company GmbH  
Die Headset Spezialisten  
Borsteler Chaussee 49 | 22453 Hamburg | Tel.: (040) 500 580 20  
[www.comhead.de](http://www.comhead.de)